



FLOW METERING EQUIPMENT

BHL Ellipse®

Pitot Tube Flow Meter

2" to 24"

Probe Construction	316 Stainless steel
Head	"Y" type, brass 1/8" FNPT
Instrument Valves	1/4" SAE flare brass ball type
Packing Gland	Molythane with CS cage nipple & close nipple
Retract Assembly	CS rods, nuts & bolts
ID Tag	Polycarbonate
Temperature Maximum *	250 °F (120 °C)
Pressure Maximum *	400 PSIG (2760 kPa)



BHL 2" - 5"	ELLIPSE (1/2")
Pipe Mounting	3/4" 3000# CS thread-o-let
Isolating Valve	3/4" Bronze ball valve

BHL 6" - 12"	ELLIPSE (7/8")
Pipe Mounting	1-1/4" 3000# CS thread-o-let
Isolating Valve	1-1/4" Bronze ball valve

BHL 14" - 24"	ELLIPSE (1-1/4")
Pipe Mounting	1-1/2" 3000# CS thread-o-let
Isolating Valve	1-1/2" Bronze ball valve

* For higher pressure and temperature application
please consult factory

Features

- No separation effects on the low (static) pressure
- Turndown ratio of 17:1
- No vacuum effects
- No vortex generation
- Very high repeatability
- Accuracy of ±¼% uncalibrated
- Lowest drag coefficient (lowest pressure loss in the industry)

MODEL SELECTOR: PBHL□□□□□

PIPE SIZE

- A - 2"
- B - 2-1/2"
- C - 3"
- D - 3-1/2"
- E - 4"
- F - 5"
- G - 6"
- H - 8"
- I - 10"
- J - 12"
- K - 14"
- L - 16"
- M - 18"
- N - 20"
- O - 24"

SCHEDULE

- A - STD
- B - 40
- C - 80
- D - TYPE L (COPPER)
- E - TYPE K (COPPER)
- X - OTHER

BOLD = Standard

PIPE MOUNTING/CONNECTOR HARDWARE

- 1 - CARBON STEEL/BRASS
- 2 - COPPER/BRASS
- 3 - PVC/BRASS
- 4 - CARBON STEEL w/DOUBLE SUPPORT
- 5 - COPPER w/DOUBLE SUPPORT
- 6 - PVC w/DOUBLE SUPPORT
- X - OTHER

INSTRUMENT CONNECTION

- A - BRASS BALL VALVE 1/4" SAE
- B - BRASS BALL VALVE w/QUICK CONNECT
- X - OTHER

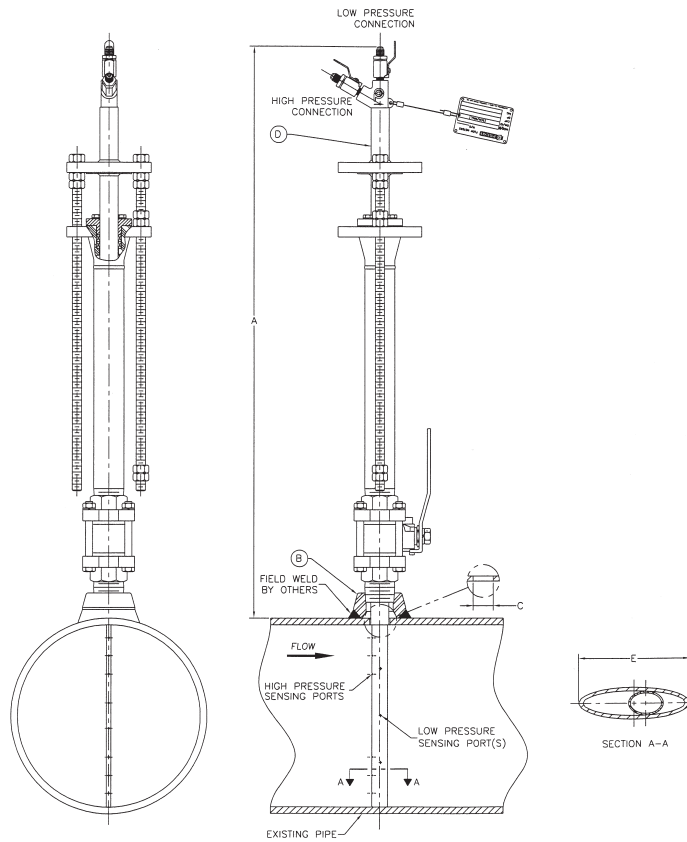
TAG *

- 1 - POLYCARBONATE
- 2 - STAINLESS STEEL

* Tag information must be included with order.

SPECIFICATIONS AND SUBMITTAL DATA

SIZE	MODEL	A HEIGHT inch (mm)	B NPT inch (mm)	C DIA inch (mm)	D DIA inch (mm)	E ELLIPSE inch (mm)
2"	PBHLAXXX	22.75 (577.9)	0.75 (19)	0.625 (15.8)	0.5 (12.7)	0.5 (12.7)
2-½"	PBHLBXXX	24.25 (616)	0.75 (19)	0.625 (15.8)	0.5 (12.7)	0.5 (12.7)
3"	PBHLCXXX	23.75 (603.2)	0.75 (19)	0.625 (15.8)	0.5 (12.7)	0.5 (12.7)
3-½"	PBHLDXXX	24.25 (616)	0.75 (19)	0.625 (15.8)	0.5 (12.7)	0.5 (12.7)
4"	PBHLEXXX	24.25 (616)	0.75 (19)	0.625 (15.8)	0.5 (12.7)	0.5 (12.7)
5"	PBHLFXXX	25.75 (654)	0.75 (19)	0.625 (15.8)	0.5 (12.7)	0.5 (12.7)
6"	PBHLGXXX	33 (838.2)	1.25 (31.7)	1.0 (25.4)	1.0 (25.4)	0.875 (22.2)
8"	PBHLHXXX	35 (889)	1.25 (31.7)	1.0 (25.4)	1.0 (25.4)	0.875 (22.2)
10"	PBHLIXXX	37 (939.8)	1.25 (31.7)	1.0 (25.4)	1.0 (25.4)	0.875 (22.2)
12"	PBHLJXXX	39 (990.6)	1.25 (31.7)	1.0 (25.4)	1.0 (25.4)	0.875 (22.2)
14"	PBHLKXXX	44 (1117.6)	1.5 (38.1)	1.25 (31.7)	1.25 (31.7)	1.25 (31.7)
16"	PBHLLXXX	46 (1168.4)	1.5 (38.1)	1.25 (31.7)	1.25 (31.7)	1.25 (31.7)
18"	PBMLMXXX	48 (1219.2)	1.5 (38.1)	1.25 (31.7)	1.25 (31.7)	1.25 (31.7)
20"	PBHLNXXX	50 (1270)	1.5 (38.1)	1.25 (31.7)	1.25 (31.7)	1.25 (31.7)
24"	PBHLOXXX	54 (1371.6)	1.5 (38.1)	1.25 (31.7)	1.25 (31.7)	1.25 (31.7)



RFI Racine Flow Meter Group *Blancett* DYNASONICS Flo-tech HEDLAND PRESO racine



8635 Washington Avenue
Racine, WI 53406-3738 USA
www.preso.com

Tel: 800-632-7337 or 262-639-6770
Fax: 262-417-1148
E-mail: info@preso.com