



FLOW METERING EQUIPMENT

# BAR Ellipse<sup>®</sup>

## Pitot Tube Flow Meter

### 2" to 24"

Probe Construction	316 Stainless steel
Head	"Y" type, brass 1/8" FNPT
Pipe Mounting	3000# CS thread-o-let
Instrument Valves	1/4" SAE flare brass ball type
ID Tag	Polycarbonate
Temperature Maximum *	250 °F (120 °C)
Pressure Maximum *	400 PSIG (2760 kPa)



<b>BAR 2" - 5"</b>	<b>ELLIPSE (1/2")</b>
Sensor Connection	1/2" Brass compression w/SS ferrule
<b>BAR 6" - 12"</b>	<b>ELLIPSE (7/8")</b>
Sensor Connection	1" CS compression w/SS ferrule
<b>BAR 14" - 24"</b>	<b>ELLIPSE (1-1/4")</b>
Sensor Connection	1-1/4" Brass compression w/SS ferrule

\* For higher pressure and temperature applications  
please consult factory

## Features

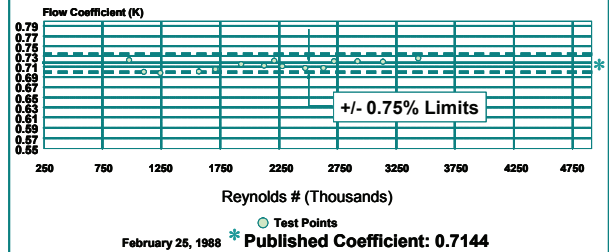
- No separation effects on the low (static) pressure
- Turndown ratio of 17:1
- No vacuum effects
- No vortex generation
- Very high repeatability
- Accuracy of  $\pm 3/4\%$  uncalibrated
- Lowest drag coefficient (lowest pressure loss in the industry)

### NIST Traceable

#### Water Calibration

Model: BAR-1600 Ellipse

Alden Research Lab. PO# 87-000930



## MODEL SELECTOR: PBAR□□□□□

### PIPE SIZE

- A - 2"
- B - 2-1/2"
- C - 3"
- D - 3-1/2"
- E - 4"
- F - 5"
- G - 6"
- H - 8"
- I - 10"
- J - 12"
- K - 14"
- L - 16"
- M - 18"
- N - 20"
- O - 24"

### SCHEDULE

- A - STD
- B - 40
- C - 80
- D - TYPE L (COPPER)
- E - TYPE K (COPPER)
- X - OTHER

### PIPE MOUNTING/CONNECTOR HARDWARE

- 1 - CARBON STEEL/BRASS
- 2 - COPPER/BRASS
- 3 - PVC/BRASS
- 4 - CARBON STEEL w/DOUBLE SUPPORT
- 5 - COPPER w/DOUBLE SUPPORT
- 6 - PVC w/DOUBLE SUPPORT
- X - OTHER

### INSTRUMENT CONNECTION

- A - BRASS BALL VALVE 1/4" SAE
- B - BRASS BALL VALVE w/QUICK CONNECT
- X - OTHER

### TAG \*

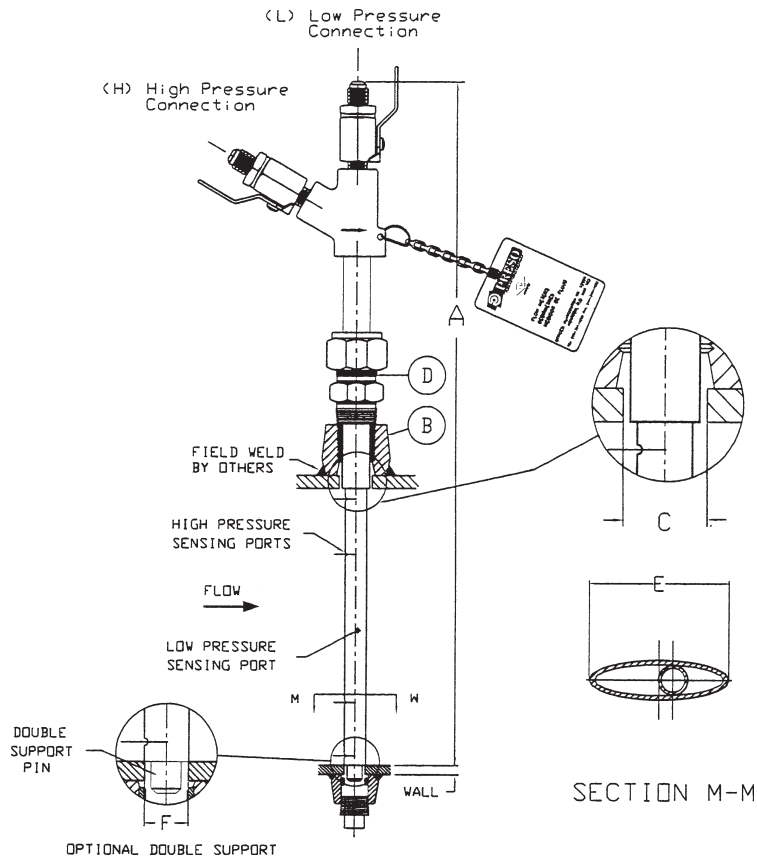
- 1 - POLYCARBONATE
- 2 - STAINLESS STEEL

**BOLD = Standard**

\* Tag information must be included with order.

# SPECIFICATIONS AND SUBMITTAL DATA

SIZE	MODEL	B inch (mm)	C inch (mm)	D inch (mm)	E ELLIPSE inch (mm)	F inch (mm)	APP. WEIGHT lbs (kg)
2"	PBARAXXX	0.5 (12.7)	0.625 (15.8)	0.5 (12.7)	0.5 (12.7)	0.375 (9.5)	2 (0.9)
2-½"	PBARBXXX	0.5 (12.7)	0.625 (15.8)	0.5 (12.7)	0.5 (12.7)	0.375 (9.5)	3 (1.3)
3"	PBARCXXX	0.5 (12.7)	0.625 (15.8)	0.5 (12.7)	0.5 (12.7)	0.375 (9.5)	3 (1.3)
3-½"	PBARDXXX	0.5 (12.7)	0.625 (15.8)	0.5 (12.7)	0.5 (12.7)	0.375 (9.5)	3.5 (1.5)
4"	PBAREXXX	0.5 (12.7)	0.625 (15.8)	0.5 (12.7)	0.5 (12.7)	0.375 (9.5)	3.5 (1.5)
5"	PBARFXXX	0.5 (12.7)	0.625 (15.8)	0.5 (12.7)	0.5 (12.7)	0.375 (9.5)	4 (1.8)
6"	PBARGXXX	1.0 (25.4)	1.125 (28.5)	1.0 (25.4)	0.875 (22.2)	0.5 (12.7)	4.5 (2)
8"	PBARHXXX	1.0 (25.4)	1.125 (28.5)	1.0 (25.4)	0.875 (22.2)	0.5 (12.7)	4.5 (2)
10"	PBARIXXX	1.0 (25.4)	1.125 (28.5)	1.0 (25.4)	0.875 (22.2)	0.5 (12.7)	5 (2.3)
12"	PBARJXXX	1.0 (25.4)	1.125 (28.5)	1.0 (25.4)	0.875 (22.2)	0.5 (12.7)	5.5 (2.5)
14"	PBARKXXX	1.25 (31.7)	1.375 (34.9)	1.25 (31.7)	1.25 (31.7)	0.875 (22.2)	6.5 (2.9)
16"	PBARLXXX	1.25 (31.7)	1.375 (34.9)	1.25 (31.7)	1.25 (31.7)	0.875 (22.2)	7 (3.1)
18"	PBARMXXX	1.25 (31.7)	1.375 (34.9)	1.25 (31.7)	1.25 (31.7)	0.875 (22.2)	7.5 (3.4)
20"	PBARNXXX	1.25 (31.7)	1.375 (34.9)	1.25 (31.7)	1.25 (31.7)	0.875 (22.2)	8 (3.6)
24"	PBAROXXX	1.25 (31.7)	1.375 (34.9)	1.25 (31.7)	1.25 (31.7)	0.875 (22.2)	9 (4)



**RFI** Racine Flow Meter Group

**Blancett**

**DYNASONICS Flo-tech**

**HEDLAND**

**PRESO**

**racine**



8635 Washington Avenue  
Racine, WI 53406-3738 USA  
www.preso.com

Tel: 800-632-7337 or 262-639-6770  
Fax: 262-417-1148  
E-mail: info@preso.com